






## Public Open House No. 1 *Spring 2023*

- Fairbanks
- Glennallen
- Healy
- Tok
- Delta Junction
- Minto

Welcome to open house number one for the Interior Alaska Transportation Plan or IATP. In addition to this video presentation, the planning team is traveling around interior Alaska to meet with communities.

# Project Team

		 vision + creativity = solutions 	
<ul style="list-style-type: none"> <li>▪ <b>Sara Lucey</b> <i>Project Manager</i></li> </ul>	<ul style="list-style-type: none"> <li>▪ <b>Jessica Smith</b> <i>Project Manager</i></li> <li>▪ <b>Morgan McCammon</b> <i>Public Involvement Support</i></li> </ul>	<ul style="list-style-type: none"> <li>▪ <b>Jamie Hansen</b> Information Insights <i>Economic &amp; Population Forecast</i></li> <li>▪ <b>Patrick Cotter</b> RESPEC <i>Transportation Planning</i></li> </ul>	<ul style="list-style-type: none"> <li>▪ <b>Joy Huntington</b> <i>Public Involvement Lead</i></li> </ul>

This project is led by the Alaska Department of Transportation and Public Facilities, or DOT&PF. The consultant team is led by DOWL, with support from Information Insights, RESPEC, and Uqaqti Consulting.



## Project Overview

- The Alaska DOT&PF is updating the Interior Alaska Transportation Plan (IATP)
- IATP is a 20-year regional multi-modal transportation plan
- The plan guides future infrastructure investments in the Interior Alaska region
- The IATP was last updated in 2010

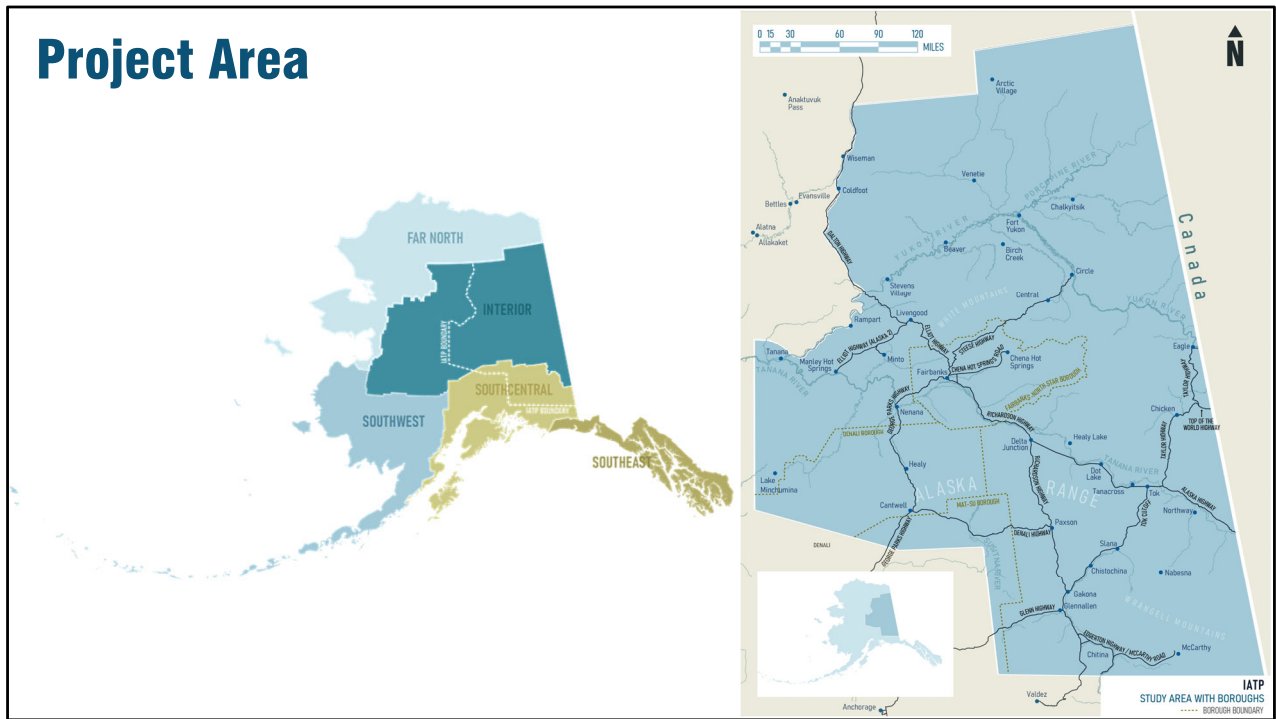
DOT&PF regularly develops and updates five regional, multi-modal transportation plans throughout the state. Statewide transportation planning is part of DOT&PF's duties per guidance required in federal and state regulations. These regulations can be found on the project website at [www.InteriorAlaskaTransportationPlan.com](http://www.InteriorAlaskaTransportationPlan.com).

These regional plans are designed to address movement between communities in the region, as well as the region in context with the rest of the state's transportation system.

Each of these plans incorporates socio-economic modeling, such as trends in community populations and economic drivers, to evaluate potential projects and prioritize them to

meet long-range transportation planning goals for DOT&PF.

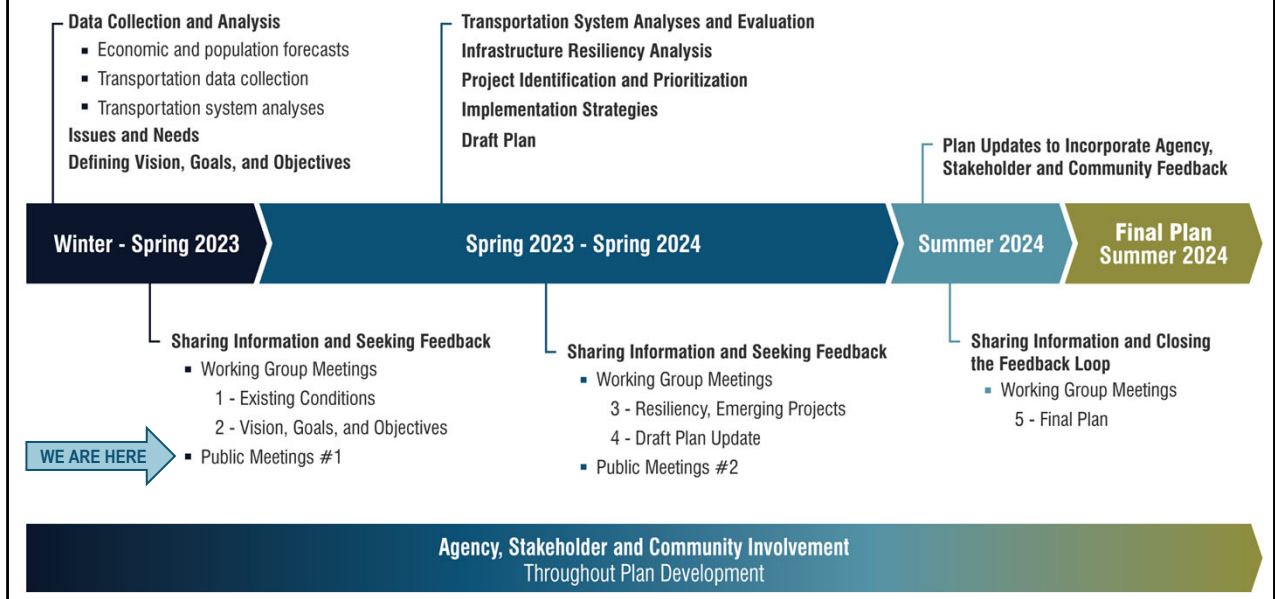
IATP is a 20-year regional multimodal transportation plan that will guide future public investments in transportation infrastructure in the interior Alaska region. This plan was last updated in 2010.



The shaded area on this map represents the study area.

The region relies on a combination of roads, rail, trail networks, airports, and riverine facilities to deliver goods and services to communities in the area. Other transportation facilities provide local access between homes and businesses, as well as locally provided goods and services.

# Project Schedule



This planning process began in Winter 2023 by gathering data and considering trends in that data throughout the region. Regional data for the IATP includes economic and population trends, and locations of existing transportation facilities, as well as the condition of those facilities.

Throughout the next year, the planning team will analyze and evaluate the DOT&PF transportation system and consider impacts such as infrastructure resiliency, priority projects, and how to implement recommendations within a fiscally constrained budget.

The planning team can only accomplish this by sharing information with communities and seeking feedback from YOU! The planning team has two important groups working to

provide this input. The first is a working group designed to include representatives from all over the interior Alaska region, representing communities, state and local governments, tribal organizations, resource agencies, and business interests. The second important group is the communities of interior Alaska. The updated plan will be finalized in Summer 2024.



## What is a Regional Transportation Plan?

- Creates a vision for the future transportation infrastructure
- Identifies existing transportation issues and conditions in the community
- Prioritizes projects from the community's perspective
- Identifies and prepares for funding sources and opportunities

A Regional Transportation Plan creates a vision for the future transportation infrastructure in the area, identifies current transportation conditions and needs in the community, prioritizes projects from the community's perspective, and identifies and prepares funding strategies when opportunities arise.





## Why are we updating the IATP?

Key goals of the plan are to:

- To identify and evaluate existing transportation facilities, issues, and needs.
- Plan for developing, maintaining, and funding roads, trails, walking and bicycling facilities, airports, and riverine facilities over the next 20-years.
- Develop a prioritized list of projects to assist the DOT&PF when funding opportunities arise.

The key goals of the plan are to identify and evaluate existing transportation facilities, issues, and needs; plan for developing, maintaining, and funding roads, trails, walking and bicycling facilities, airports, and riverine facilities over the next 20-years; and develop a prioritized list of projects to assist the DOT&PF when funding opportunities arise.

## Transportation Modes

### Roads & Rail



Alaska Railroad, public roads and highways

### Aviation



Public and private facilities

### Ports & Riverine



Passenger and cargo routes, distribution facilities and barge landing sites

### Trails



Summer and winter trails

### Ice Roads



Over-land and waterbody crossings or routes

The IATP looks at multiple modes of transportation, as well as potential land use changes and economic benefits.

The IATP Update will evaluate the current methods of transportation, including roads, aviation, summer and winter trail networks, winter only access facilities such as ice roads, and riverine systems.



## Early Information & Observations

### What have we found:

- Data from DOT&PF and similar sources
- Technical Reports, Community Plans, other Long-Range Plans, etc.
- Demographics

### What do we need more of:

- Barge landings
- Trails/Winter Trails
- Ice Roads
- Community concerns and/or needs

### How can you help?

- IATP StoryMap

Data has been collected for each transportation mode. Visit the StoryMap – Existing Infrastructure Map to view documented facilities to date.

The plan update will also develop an inventory of trails, winter trails, ice roads, and ice bridges; transportation infrastructure that is crucial to the people calling interior Alaska home.



## We need your help!

- What are the transportation needs in your community today?
- What do you think the transportation system should look like in your community in 20 years?
- Come meet the planning team and share your thoughts!
- Email the team [iatp@dowl.com](mailto:iatp@dowl.com) or call Public Involvement at (907) 562-2000.

Visit the project website  
[www.interioralaskatransportationplan.com](http://www.interioralaskatransportationplan.com)  
and sign up to project mailing list!

The project team is looking to you to provide initial input on the updated transportation plan. We're looking for comments through June 30, 2023! Would you like to get involved? There are so many ways! Not sure what topics to address? We know thinking 20-years into the future can be challenging, so the planning team has a few conversation-starting questions for you to consider!

- What do you think the transportation system should look like in 20 years?
- In what ways are your everyday needs in terms of health, subsistence, education, recreation, and employment being met or not being met by the transportation system?
- What are three transportation issues, needs, or projects

you'd like to see accomplished in your area over the next 20 years?

Another way to get involved is to visit the StoryMap on the project website [www.InteriorAlaskaTransportationPlan.com](http://www.InteriorAlaskaTransportationPlan.com) to learn more about the plan and share your feedback on the transportation facilities and needs in your community. Email the project team at [iatp@DOWL.com](mailto:iatp@DOWL.com) or call the project team at 907-562-2000 to share your thoughts.

Finally, the planning team is coming to a community near you! To learn about the project in person, please visit us at one of our community meetings in May 2023. Details are listed on the project website.



**Thank you for participating!**

**Project Team Information:**

**DOT&PF:**

- Sara Lucey, Project Manager

**DOWL**

- Jessica Smith, Project Manager

**Uqaqti**

- Joy Huntington, Public Involvement

**SCAN ME!**

Scan this code with your smartphone camera to view the StoryMap.

That concludes our presentation. Stay informed by visiting [www.InteriorAlaskaTransportationPlan.com](http://www.InteriorAlaskaTransportationPlan.com).

Submit comments and questions any time to [iatp@dowl.com](mailto:iatp@dowl.com).

Thank you for taking the time to learn more about the Interior Alaska Transportation Plan!